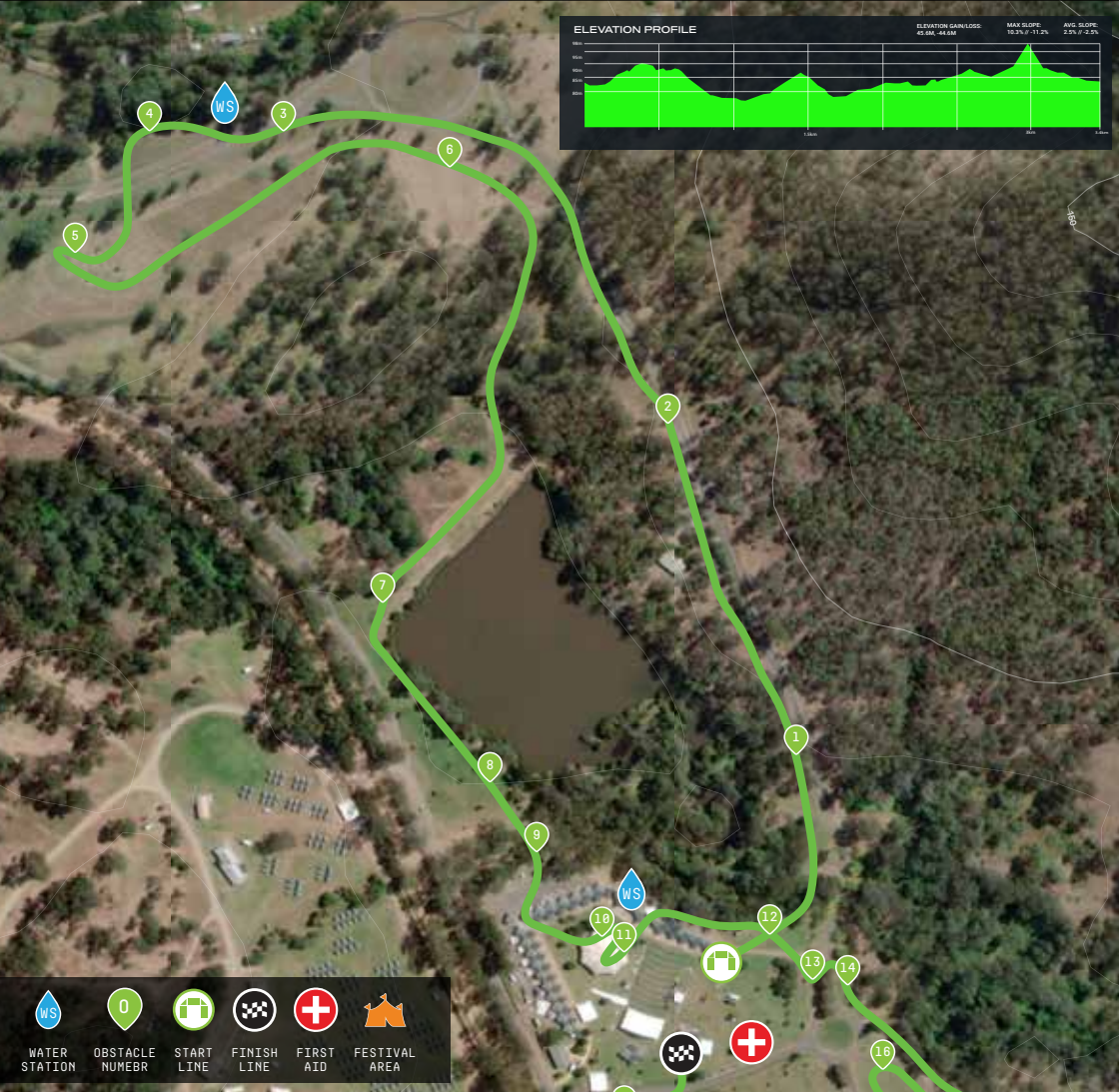
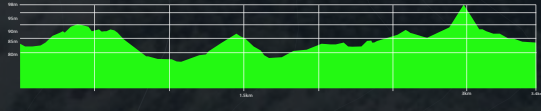








ELEVATION PROFILE



					
WATER STATION	OBSTACLE NUMBR	START LINE	FINISH LINE	FIRST AID	FESTIVAL AREA

OBSTACLE LIST

- |                      |                       |
|----------------------|-----------------------|
| 1. 4FT WALL          | 11. RICOCHET          |
| 2. PENDULUM          | 12. A FRAME           |
| 3. CANYON            | 13. HANIBAL HOIST     |
| 4. ROPE CLIMB        | 14. DRAGONS BACK      |
| 5. TILTING LADDERS   | 15. SLIP WALL         |
| 6. MULTIRIG          | 16. BALANCE BEAMS     |
| 7. OLYMPUS           | 17. IE POWERBAG CARRY |
| 8. TYROLEAN TRAVERSE | 18. MONKEY BARS       |
| 9. Z WALLS           | 19. LASER PISTOLS     |
| 10. SKULL VALLEY     | 20. FINISH WALL       |